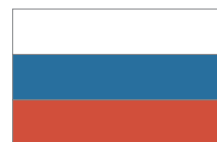


Gachon University Gil Medical Center





CONTENTS

| | |
|---|----|
| 01 Hospital Introduction | 04 |
| Overview | 04 |
| Cancer Center | 08 |
| Cerebrocardiovascular Center | 09 |
| 02 Medical Departments Introduction | 10 |
| Medical Departments & Doctors | 10 |
| Estimated Cost | 22 |
| 03 VIP Health Promotion Center | 30 |
| 04 International Healthcare Center Introduction | 42 |
| 05 Foundation Introduction | 44 |

Mission & Vision



Gachon University Gil Medical Center

Gachon University Gil Medical Center(GUGMC) is the largest upper-level general hospital in Incheon City, and it is located at the closest distance (35 km, takes 30 minutes) from Incheon International Airport. It operates multiple specialized centers, such as Main Building, Cancer Center, Emergency Center, Women's Center, Cerebrocardiovascular Center, etc.



Blue line is an underground tunnel



Designation by Korean Ministry of Health as an Excellent Hospital Serving Foreign Patients



Officially Designated Hospital by Olympic Council of Asia (OCA)



Incheon City Designation as an Excellent Hospital Attracting Foreign Patients (12.2022 ~ 12.2024)

Gachon University Gil Medical Center(GUGMC) won the nation's highest grade in medical quality evaluation by Korean Ministry of Health and Welfare (the top 2% (among 8 hospitals) in the country).

- Assessment of patient safety, medical quality, publicity, medical delivery system, support activities, etc.
- Education and training, rated No.1 in research & development

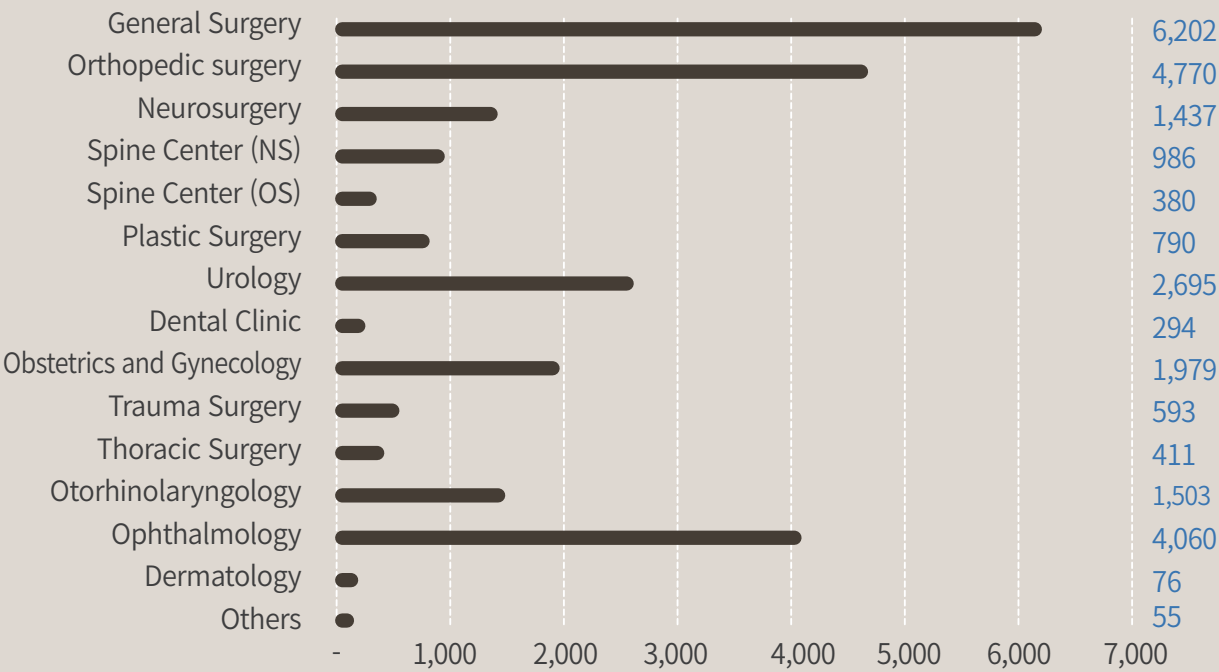


Medical Departments

31 medical departments including Gastroenterology, Neurosurgery, Neurology, General Surgery, Obstetrics & Gynecology, Urology, Orthopedics

| | |
|------------|------------|
| ■ Sickbeds | 1,450 beds |
| ■ Doctors | 527 |
| ■ Nurses | 1,887 |

2022 Surgical Statistics (Total 26,231)



■ Computed Tomography (CT)

CT scans use X-rays to take a single layer of the anatomical state of soft tissue and show it in the shape of a picture using a computer. The test results distinguish whether the lesion is malignant or benign, and identify the characteristics of the lesion and its location. It is also used to determine the metastasis to adjacent organs, liver, lungs, and lymph nodes. It is generally used to evaluate the organs of the central nervous system, head and neck, lungs, and abdomen, and is useful for screening primary cancer or metastasis.

❖ Number of units : 7 units



■ Magnetic Resonance Imaging (MRI)

MRI scans provide multiple-sided tomographic images on the side and longitudinal sides of the human body based on the interaction of magnetic fields and radiation from specific nuclei in the human body. MRI is a good test to distinguish normal, benign and malignant tumors by recognizing various types of tissues such as cancer and organs, and to check for stage of diseases or metastasis. It is useful for examining the brain, spinal cord, breast, musculoskeletal system and abdominal organs, but it is not appropriate for testing moving organs such as lungs, stomach and colon.

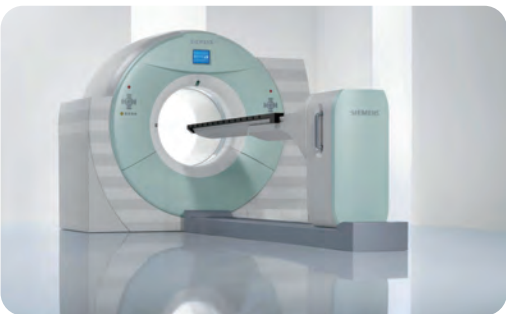
❖ Number of units : 6 units



■ Positron Emission Tomography (PET)

PET test is a diagnostic method that shows the presence and distribution of cancer by tomography and three-dimensional images of metabolic changes in tumor cells. It is useful if metastasis is suspected, to find out location of metastasis, or if it is difficult to distinguish it from cancer with other tests.

❖ Number of units : 2 units



■ Novalis Tx

It is the world's best multifunctional radiotherapy equipment that combines cyberknife, tomotherapy, and rapid arc functions. It is an existing "world-class" radiotherapy device that can implement advanced radiotherapy such as intensity-modulated radiotherapy (IMRT), volumetric-modulated arc radiotherapy (VMAT), image-guided radiotherapy (IGRT), and stereoscopic radiotherapy (SRS) at the highest level. It was introduced in October 2009 for the first time in Korea and Asia.

❖ Number of units : 1 unit



■ Clinac iX

Clinac iX is a state-of-the-art cancer treatment equipment that tracks and removes only cancer cells in the body using three-dimensional images and high-energy radiation. Based on a wide area of treatment area, it is responsible for 3-dimensional conformal radiotherapy (3D-CRT) and intensity-modulated radiation therapy (IMRT).

❖ Number of units : 1 unit



■ RapidArc

Real-time adjustment of radiation dose and radiation irradiation area around the patient can minimize radiation exposure to normal tissues and maximize radiation dose to the tumor. In particular, it is the best radiation therapy equipment that can focus radiation on cancer tissue with minimal treatment time using the respiratory linked Gated RapidArc technique that reflects tumor movement according to breathing.

❖ Number of units : 1 unit



Cancer Center

Gachon University Gil Medical Center (GUGMC) Cancer Center is the first nationally-designated private university hospital Cancer Center that provides personalized treatment to patients. Also, We have a specialized Women's Cancer Center equipped with cutting edge equipment like Novalis Tx, Clinac iX that can further assist multidisciplinary consultation system, raising the expertise for cancer treatment. GUGMC received the highest grade in treatment efficacy evaluation for stomach cancer, liver cancer, colon cancer, breast cancer, and lung cancer by National Health Insurance Review & Assessment Service.



■ Multidisciplinary Consultation

Multidisciplinary consultation is a system in which specialists in different subjects gather at one room to consult one patient. Considering the various characteristics of cancer patients, the best diagnosis and treatment plan can be derived to patients through cooperation with professional medical staffs, and accurate diagnosis and treatment can be provided to patients.

■ Cancer Center Coordinator

Cancer coordinators provide systematic and specialized individual counseling for each cancer disease. We are in charge of explaining diseases and adjusting the examination schedule of cancer patients, preparing for internal medicine and surgery part, conducting multidisciplinary treatment, and educating cancer patients, running multidisciplinary consultation, chemotherapy education, etc.

Cerebrocardiovascular Center

Gachon University Gil Medical Center(GUGMC) Cerebrocardiovascular Center operates an angiography equipment and operation room, and a hybrid operation room that can perform diagnostic scan (CT, MRI) for post-surgery status. Diagnosis, treatment, and monitoring are made as one-stop process that allow both internal procedures and surgical operations. In addition, following the success of the first heart transplantation operation in Asia in 1997, we successfully transplanted the artificial heart (left ventricular assist device). For the fifth consecutive year in evaluation by the National Health Insurance Assessment Service, we received the first grade in coronary artery bypass surgery, myocardial infarction and stroke management.



Rated No.1 in adequacy evaluation by National Health Insurance Review & Assessment Service



▼ Picture of doctors performing Hybrid surgery



Cardiology

Thyroid Cancer Center

Since arrhythmias are responsible for 90% of sudden deaths, regular arrhythmia check-ups are necessary if you have shortness of breath, dizziness or indigestion.

The use of a robotic surgery system with ultra-precision in thyroid cancer cases can minimize complications and increase patient satisfaction.

Achievements & Strengths

- Asia's first successful heart and lung simultaneous transplant in 1997
- Incheon's first successful artificial heart transplant surgery
- Top rated for acute myocardial infarction treatment
- Top rated for coronary artery bypass graft surgery
- Approximately 100,000 heart disease patient consultation cases a year
- Multidisciplinary consultation by cardiologists, thoracic surgeons, anesthesiologists and vascular surgeons

Achievements & Strengths

- Robotic surgery reduces pain and bleeding, length of hospital stay, complications and promote fast return to daily life
- Designated coordinator manages overall treatment schedule including tests, consultation and surgery as well as provides information for pain management, symptom management, emotional support, etc.



■ GOOD DOCTOR
Yae Min Park

Subspecialty

Heart palpitations, pounding heart, arrhythmia, atrial fibrillation, artificial heart pacemakers, paroxysmal ventricular tachycardia, ventricular tachycardia, bradycardia, fainting



■ GOOD DOCTOR
Joon-Hyop Lee

Subspecialty

Thyroid cancer, benign thyroid disease, endoscopic thyroid surgery, parathyroidism, adrenal disease

Urology

Prostate hypertrophy is more common in men from 60 years old or more. Accurate diagnosis and the use of robotic surgery technology result in increased surgical accuracy and improved patient outcomes.

Achievements & Strengths

- Minimally invasive surgery and laparoscopic surgery, minimize complications and promote fast return to daily life
- Ultra-precise surgery by Da Vinci robotic surgery system for quick recovery by minimal damage to normal tissue
- Designated coordinator manages overall treatment schedule including tests, consultation and surgery as well as provides information for pain management, symptom management, emotional support, etc.



■ GOOD DOCTOR

Kyung-Jin Chung

Subspecialty

Urological cancer, prostate hypertrophy, urinary stones, urinary disorders and pediatric urology

Oncology

International standard-based cancer treatment delivers personalized care utilizing gene-targeted approaches.

Achievements & Strengths

- Providing the best and the latest targeted therapy, immuno-cancer therapy and general chemotherapy based on international standards
- Professional treatment in Hematopoietic Stem Cell Transplant Ward
- Comprehensive and customized treatment through multidisciplinary consultation
- Designated coordinator manages overall treatment schedule including tests, consultation and surgery as well as provides information for pain management, symptom management, emotional support, etc.



■ GOOD DOCTOR

Sun-Jin Sym

Subspecialty

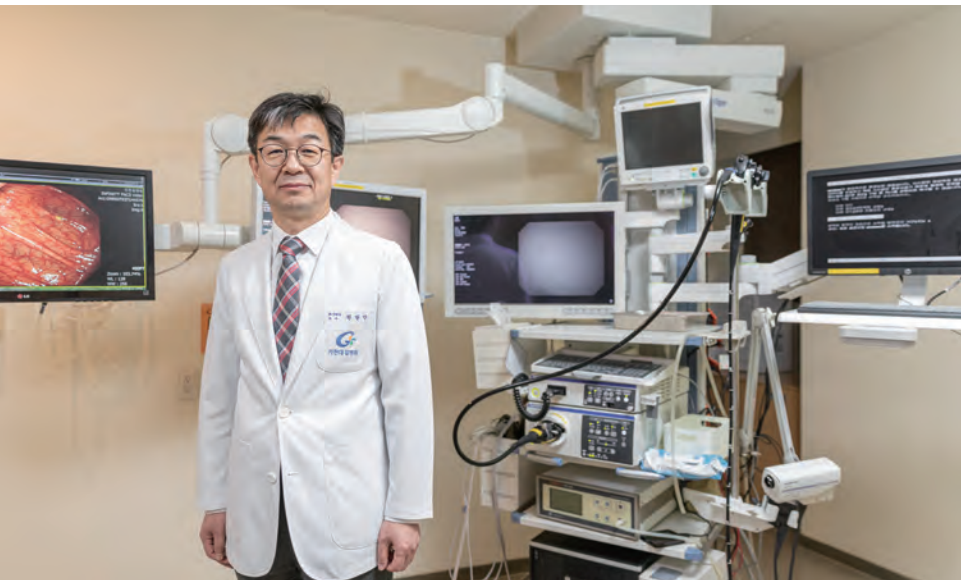
Gastric cancer, colon cancer, hepatopancreatic biliary tract cancer, gastrointestinal stromal tumor disease

Gastroenterology

Endoscopy not only accurately diagnoses various digestive conditions but also offers therapeutic options.

Achievements & Strengths

- Early diagnosis and treatment using the latest endoscope & ultrasonography
- 97% success rate of endoscopic retrograde cholangiopancreatography(ERCP)
- Performed more than 250,000 endoscopy cases
- Certified as excellent endoscopy room
- Operation of gastrointestinal center
- Operation of gastrointestinal cancer center
- Operation of an inflammatory bowel disease center
- Development and utilization of Dr. Answer, Korea's first artificial intelligence(AI) colonoscopy predictive diagnosis system



■ GOOD DOCTOR

Kwang-An Kwon

Subspecialty

Treatment endoscopy (gastrolisis, polyp removal, foreign body removal, stent insertion, etc.), reflux esophagitis, Barrett's esophagus, endoscopic resection of early esophageal/gastric/colorectal cancer, inflammatory bowel disease (Crohn's disease, ulcerative colitis)

Colorectal Clinic

Hyperthermic Intraperitoneal Chemotherapy (HIPEC) is an effective treatment for peritoneal metastasis in colon cancer by administering chemotherapy directly into the abdominal cavity.

Achievements & Strengths

- Rated No.1 in Health Insurance Review and Assessment Service for colorectal cancer adequacy evaluation
- Operation of peritoneal metastasis recurrence cancer clinic
- Operation of minimally invasive surgery center, a leading delicate laparoscopic treatment
- Designated coordinator manages overall treatment schedule including tests, consultation and surgery as well as provides information for pain management, symptom management, emotional support, etc.



■ GOOD DOCTOR

Won-Suk Lee

Subspecialty

Colorectal cancer, rectal cancer, small intestinal cancer, peritoneal cancer, peritoneal metastatic cancer, laparoscopic surgery, Da Vinci robotic surgery, single-hole surgery, HIPEC surgery, tumor reduction, Crohn's disease, anal disease, various hernia, constipation, etc.

Breast Cancer Clinic

Breast cancer clinic offers a patient-centered approach to care, encompassing a holistic consideration of the patient's quality of life.

Achievements & Strengths

- Rated No.1 in Health Insurance Review and Assessment Service for breast cancer adequacy evaluation
- Early detection with the latest equipment such as digital mammography and color doppler ultrasonography
- Cosmetic breast preservation surgery that leaves minimal skin incision
- Designated coordinator manages overall treatment schedule including tests, consultation and surgery as well as provides information for pain management, symptom management, emotional support, etc.



■ GOOD DOCTOR
Heung-Kyu Park

Subspecialty

Breast cancer and breast tumor, metastatic breast cancer and male breast cancer

Orthopedics

Maintaining the health of your knees is crucial for a long and active life. Discover the leading knee surgeon in S.Korea.

Achievements & Strengths

- Operation of shoulder joint clinic
- Operation of hands (finger) and microsurgery clinic
- Operation of spine clinic
- Operation of hip joint clinic
- Operation of knee joint clinic
- Operation of foot clinic



■ GOOD DOCTOR
Jae-Ang Sim

Subspecialty

Knee, knee arthritis, inflammatory arthritis, artificial joint replacement, artificial joint re-operation, arthroscopy, sports injury, trauma (fracture, osteomyelitis)

Lung Center

General Surgery

Early and precise diagnosis is vital in the treatment of lung cancer. The most effective preventive measure is to quit smoking and undergo regular health screenings.

Stomach cancer can often go undetected in its early stages, so doing regular check-ups is crucial in reducing its mortality rate by up to 90%.

Achievements & Strengths

- Operation of lung center for comprehensive diagnosis and treatment of respiratory diseases
- Rated No.1 in lung cancer surgery, patient care and survival rate adequacy assessment
- Rated No.1 in pneumonia adequacy assessment
- Rated No.1 in chronic obstructive pulmonary disease (COPD) adequacy assessment
- Accurate diagnosis with introduction of endobronchial ultrasound
- Implementing a multidisciplinary consultation system with multiple doctors simultaneously
- Designated coordinator manages overall treatment schedule including tests, consultation and surgery as well as provides information for pain management, symptom management, emotional support, etc.

Achievements & Strengths

- Rated No.1 in Health Insurance Review and Assessment Service for stomach cancer adequacy evaluation
- Operation of gastrointestinal cancer center
- Implementing a multidisciplinary consultation system with multiple doctors simultaneously
- Designated coordinator manages overall treatment schedule including tests, consultation and surgery as well as provides information for pain management, symptom management, emotional support, etc.



■ GOOD DOCTOR
Sun-Young Kyung

Subspecialty
Lung cancer, tuberculosis and pulmonary fibrosis



■ GOOD DOCTOR
Woon-Kee Lee

Subspecialty
Gastric cancer, gastric tumor, laparoscopic gastrointestinal surgery

Obstetrics & Gynecology

Uterine cancer may not present any early warning signs. Regular health check-up is crucial in early diagnosis and treatment.

Achievements & Strengths

- Minimizes pain and surgical site with minimally invasive endoscopic surgery
- Introduction of 'Primo Vision', Korea's first embryo monitoring system
- In vitro fertilization pregnancy success rate reached 67.7%



■ GOOD DOCTOR
Kwang-Beom Lee

Subspecialty

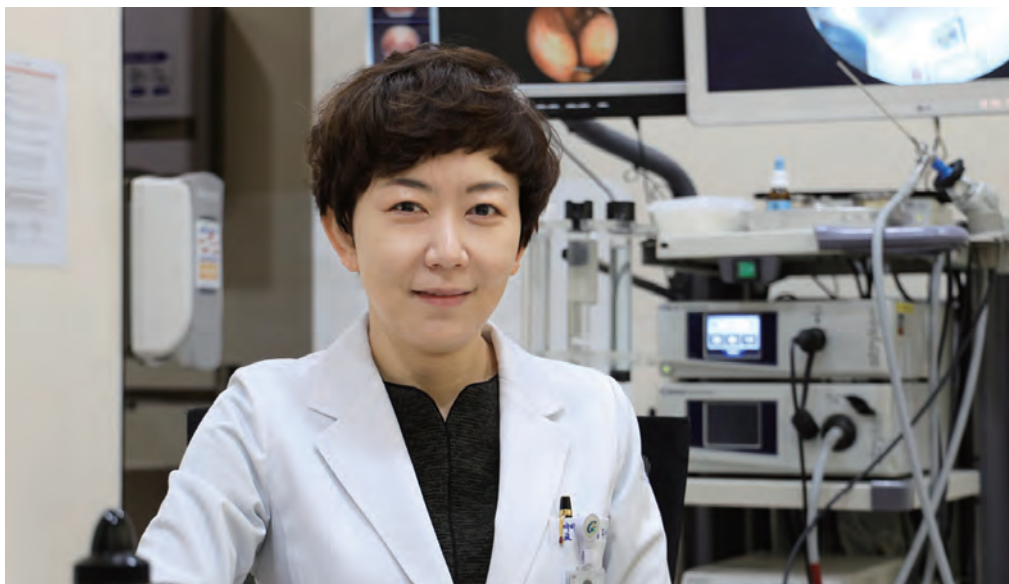
Cervical cancer, endometrial cancer, ovarian cancer, vulvar cancer, gynecological endoscopy, menopause

Otorhinolaryngology

For those suffering from recurrent seasonal nasal congestion and sinusitis, endoscopic surgery may be a viable treatment option.

Achievements & Strengths

- Excellent medical staffs and state-of-the-art medical equipment
- Provide patient-centered care for a variety of diseases




■ GOOD DOCTOR
Joo Hyun Jung

Subspecialty

Sinusitis, high-level endoscopic sinus surgery, rhinitis, snoring, sleep apnea, allergy-allergic rhinitis surgery and immunotherapy, nose plastic surgery

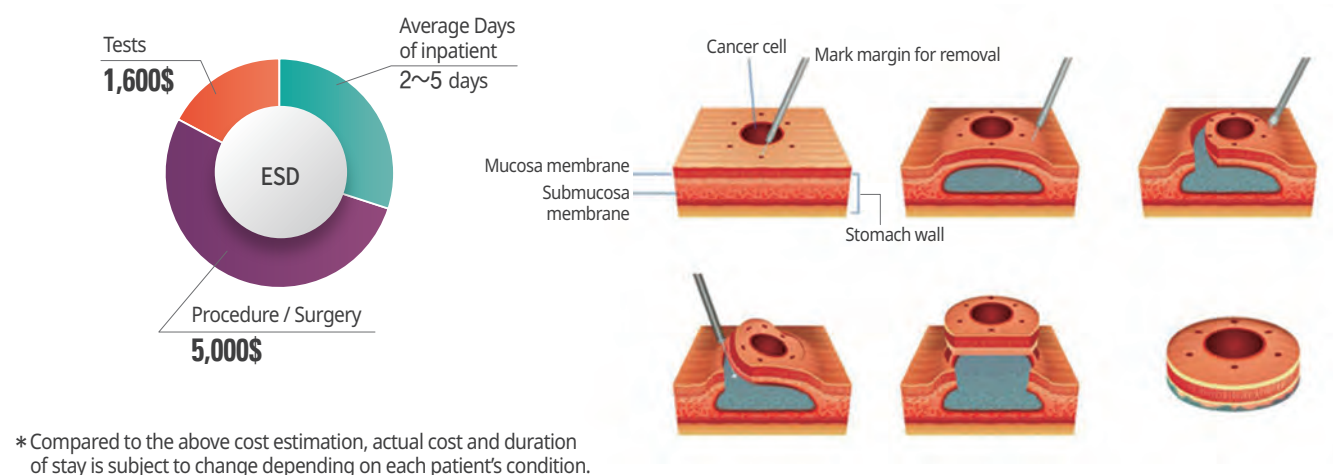
Estimated Cost

■ Stomach Cancer




Endoscopic Submucosal Dissection

- Procedure to remove gastrointestinal tumors (early stage cancer, adenoma or small submucosal tumor) from submucosal layer using endoscope

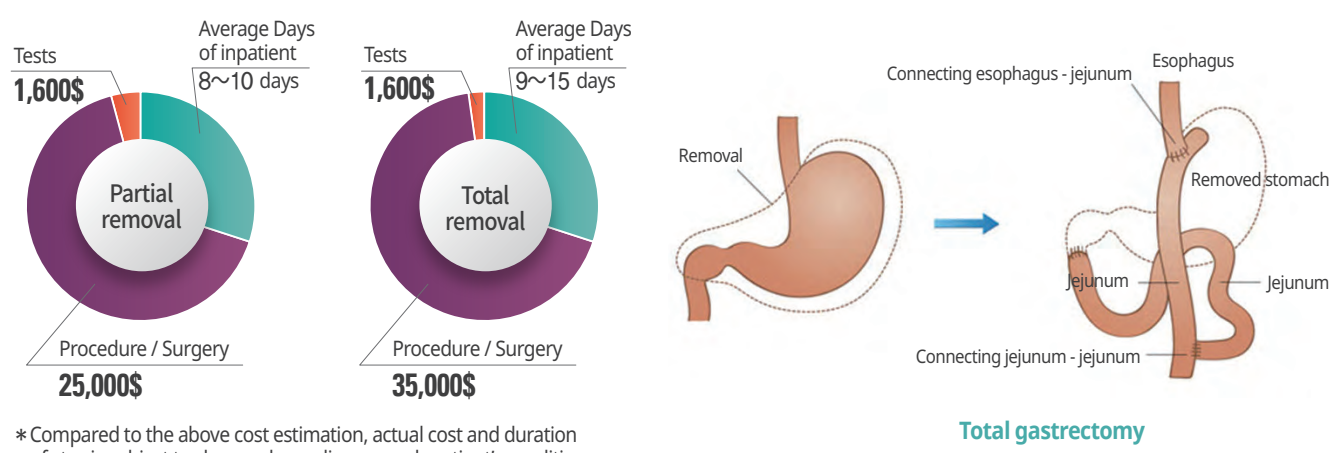


* Compared to the above cost estimation, actual cost and duration of stay is subject to change depending on each patient's condition.




Gastrectomy

- For advanced stomach cancer, laparoscopic surgery or conventional open surgery is performed for partial removal, total removal, proximal partial removal, combined organ resection, pylorus preserving surgery, etc.



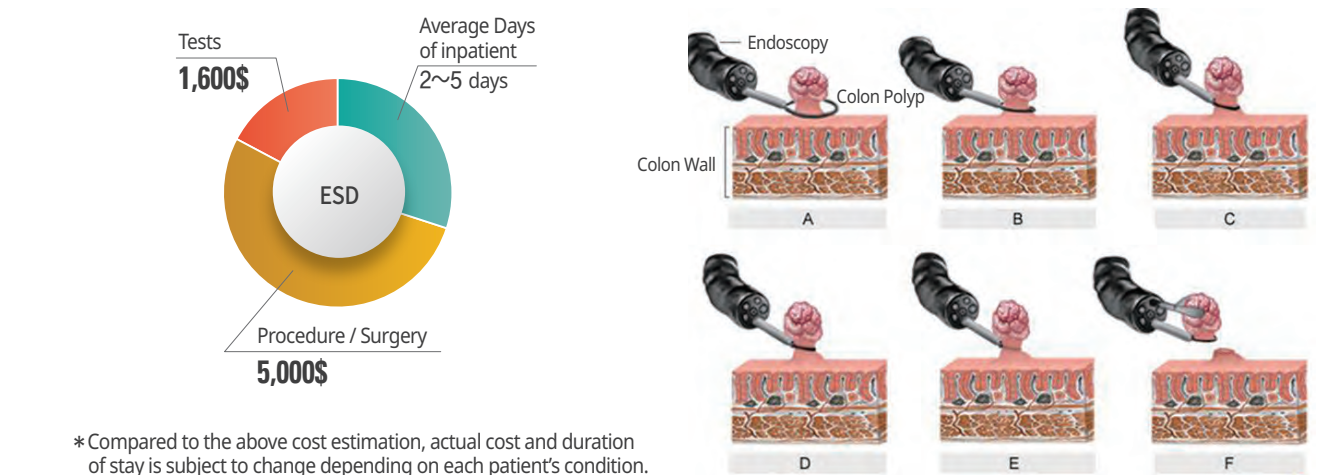
* Compared to the above cost estimation, actual cost and duration of stay is subject to change depending on each patient's condition.

■ Colon Cancer




Endoscopic resection

- Endoscopic resection is performed for early stage colon cancer, of which cancer cell is remained in or within mucosa layer without metastasis to blood vessel or lymph nodes.

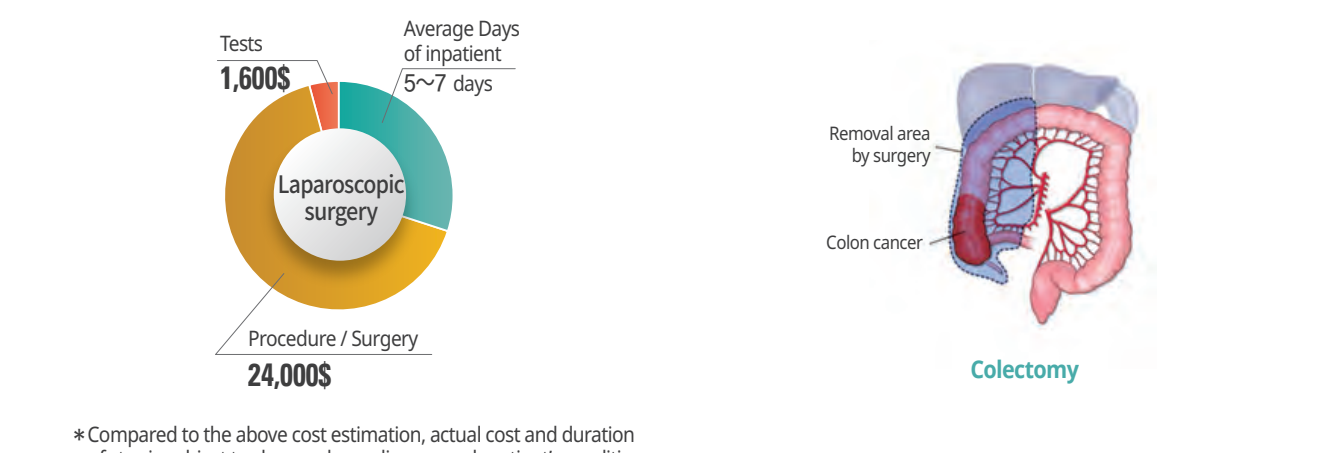


* Compared to the above cost estimation, actual cost and duration of stay is subject to change depending on each patient's condition.



Colorectal resection

- For surgical treatment of early stage of colorectal cancer and progressive cancer, complete removal is done for tumor as well as lymph nodes and blood vessels that metastases can occur. Usually this can be done laparoscopically except for large size tumor or severe metastasis cases to nearby organ. Laparoscopic surgery generally has less complications than conventional open method.



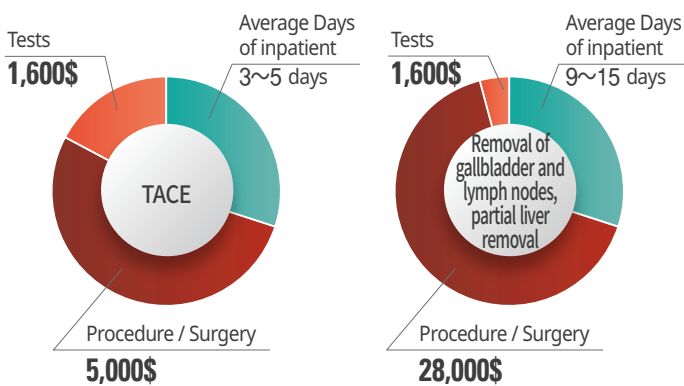
* Compared to the above cost estimation, actual cost and duration of stay is subject to change depending on each patient's condition.

Estimated Cost

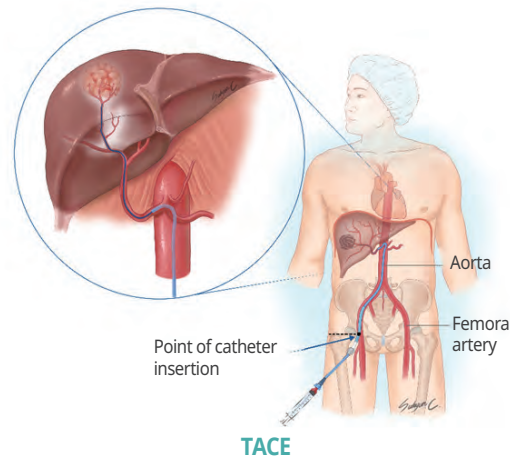
■ Liver Cancer



- Liver cancer treatment depends on cancer staging, remaining liver function, and complications (e.g. liver cirrhosis). Commonly performed methods include liver resection, transcatheter arterial chemoembolization (TACE), radiofrequency ablation (RFA), liver transplantation, etc.



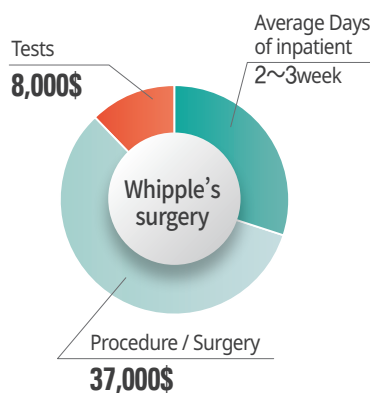
* Compared to the above cost estimation, actual cost and duration of stay is subject to change depending on each patient's condition.



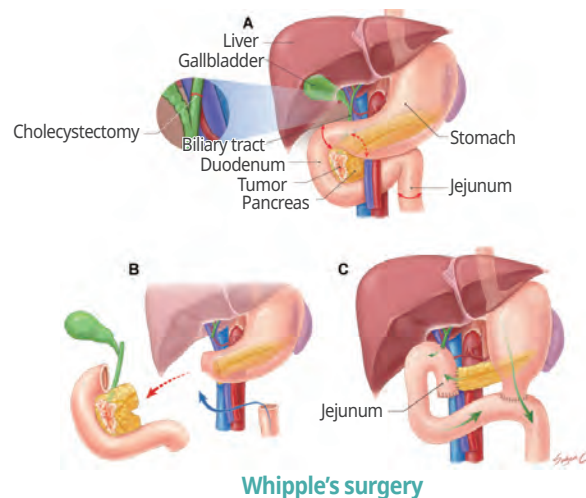
■ Pancreatic Cancer



- Pancreatic cancer surgery is performed if the cancer is confined in pancreas. Total pancreatic resection is performed if the tumor is spread throughout the whole pancreas. If the tumor is located at the head of the pancreas, Whipple's surgery or pylorus-preserving pancreaticoduodenectomy is performed. If the tumor is at the tail of the pancreas, distal pancreatectomy is performed.



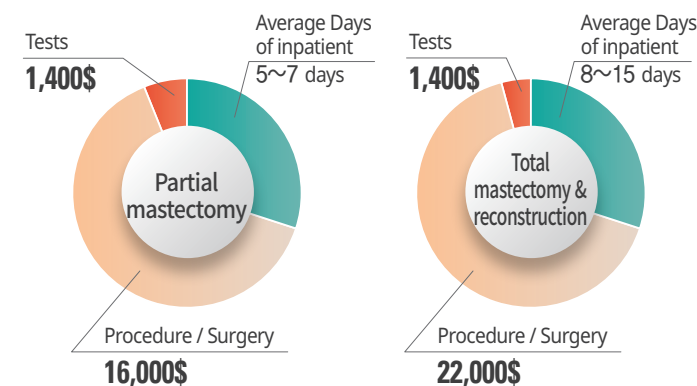
* Compared to the above cost estimation, actual cost and duration of stay is subject to change depending on each patient's condition.



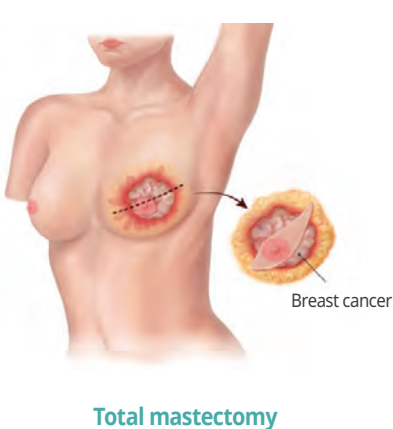
■ Breast Cancer



- Breast cancer surgery involves the physical removal of breast and underlying tumor tissue in armpit area. Depending on biopsy and cancer stage result, specific treatment plan is chosen, including total mastectomy, partial mastectomy, biopsy, axillary lymph node dissection, breast reconstruction, etc.



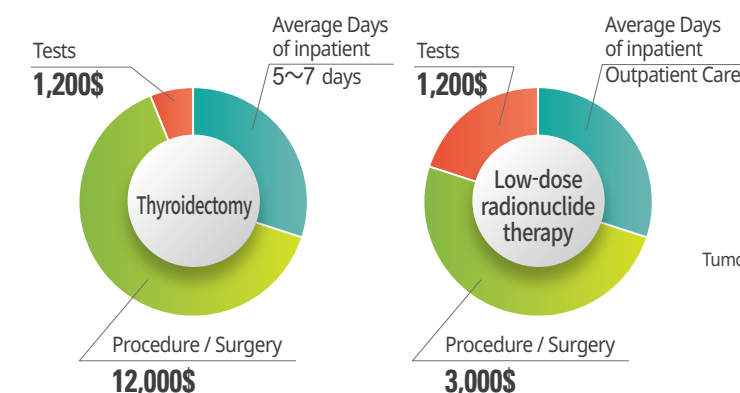
* Compared to the above cost estimation, actual cost and duration of stay is subject to change depending on each patient's condition.



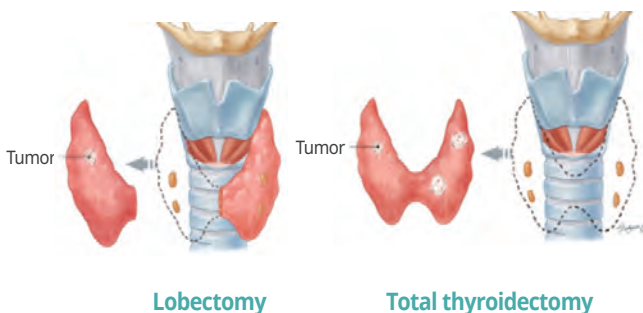
■ Thyroid Cancer



- Thyroid cancer surgery involves the surgical removal of all or part of the thyroid gland (lobectomy, total thyroidectomy), for malignant tumor and benign nodules. Depending on cancer staging, post-op treatment plan is decided, such as radiation therapy, etc.

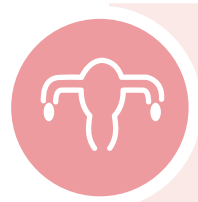


* Compared to the above cost estimation, actual cost and duration of stay is subject to change depending on each patient's condition.

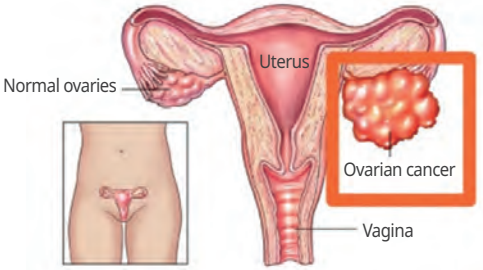
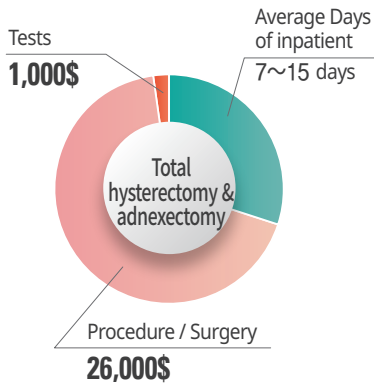


Estimated Cost

■ Ovarian Cancer

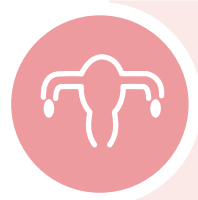


- Ovarian cancer surgery is performed not only for diagnosis purpose but also for removal of tumor. If metastases are found to colon, rectum or ileum, combined surgery with gastrointestinal surgeon is done. If metastases are found in ureter or bladder, urology surgeons will join the surgery to perform surgeries, such as cystectomy or ureter removal.

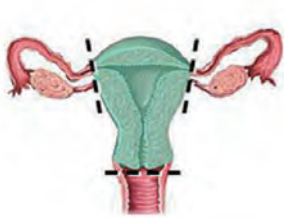
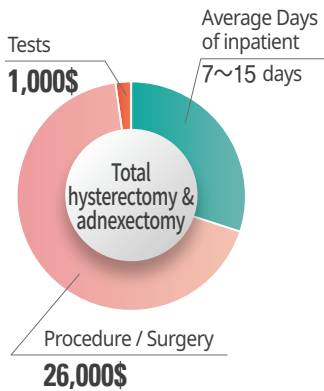
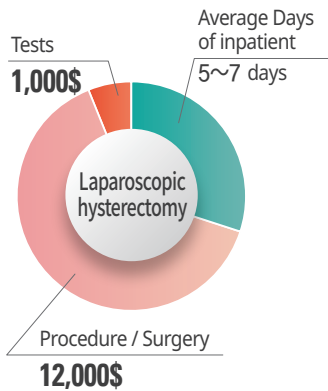


* Compared to the above cost estimation, actual cost and duration of stay is subject to change depending on each patient's condition.

■ Uterine Cancer



- Uterine cancer surgery involves removal of cervix, uterus, ovaries and/or fallopian tube by either laparoscopically or conventional open surgery. Common diseases include cervical intracellular neoplasia, cervical cancer and endometrial cancer. Depending on necessity, urology or general surgery specialists participate in uterine cancer surgery when colectomy, cystectomy or ureter removal is needed.



Total removal



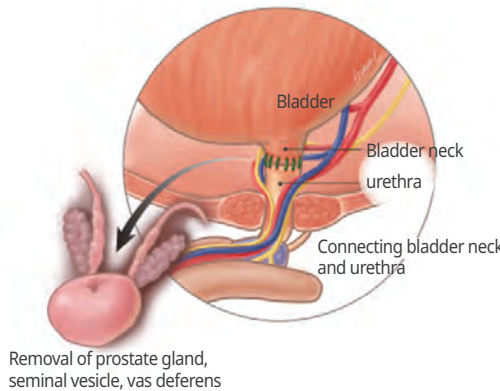
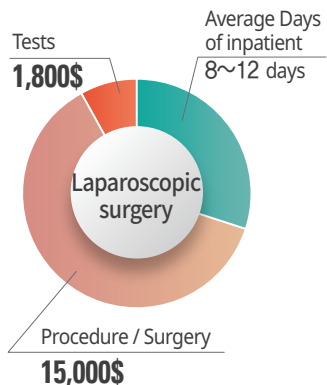
Radical removal

* Compared to the above cost estimation, actual cost and duration of stay is subject to change depending on each patient's condition.

■ Prostate Cancer



- Prostate cancer surgery involves radical removal of prostate gland either laparoscopically or by conventional open surgery. Depending on severity, pelvic lymph node removal is accompanied during surgery as needed.



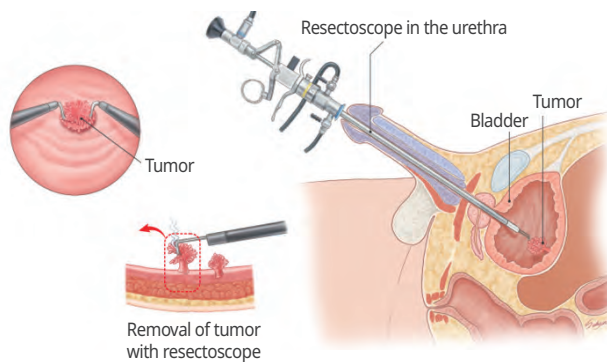
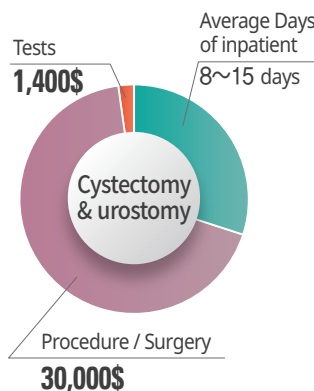
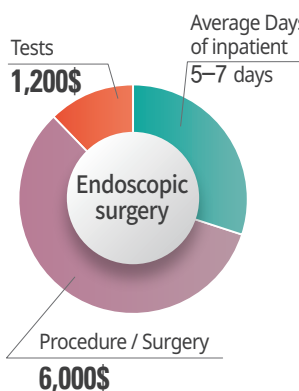
Radical prostatectomy

* Compared to the above cost estimation, actual cost and duration of stay is subject to change depending on each patient's condition.

■ Bladder Cancer



- In case of bladder cancer, treatment options vary depending on location of tumor. For tumor inside the bladder, transurethral resection of bladder tumor (TUR-BT) is available. If tumor is spread to bladder muscle layer or cases of cancer recurrence or high risk for further progression, conventional open surgery, radical cystectomy, lymph node removal and ureterostomy are performed.



TUR-BT

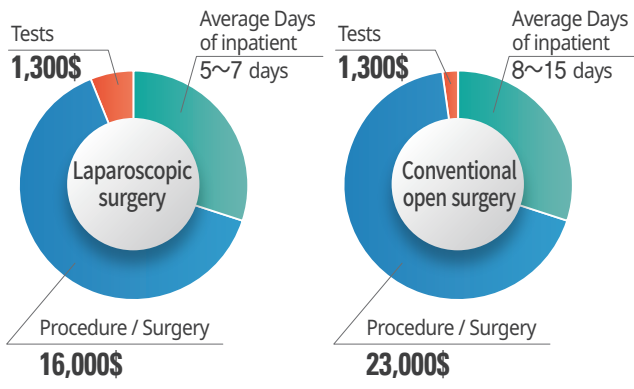
* Compared to the above cost estimation, actual cost and duration of stay is subject to change depending on each patient's condition.

Estimated Cost

■ Kidney Cancer



- In case of malignant tumor in kidney, radical nephrectomy and lymph node removal is done.

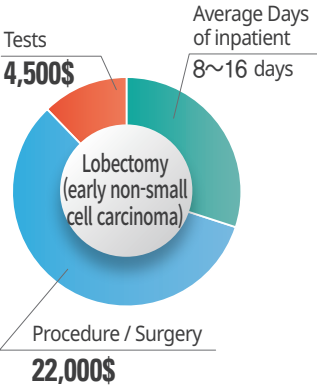


* Compared to the above cost estimation, actual cost and duration of stay is subject to change depending on each patient's condition.

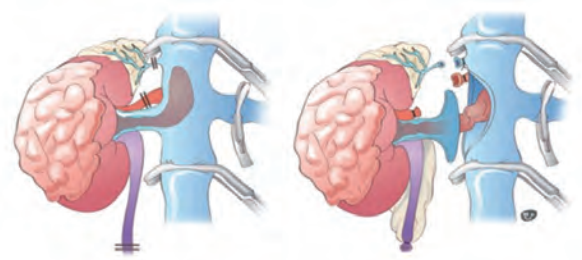
■ Lung Cancer



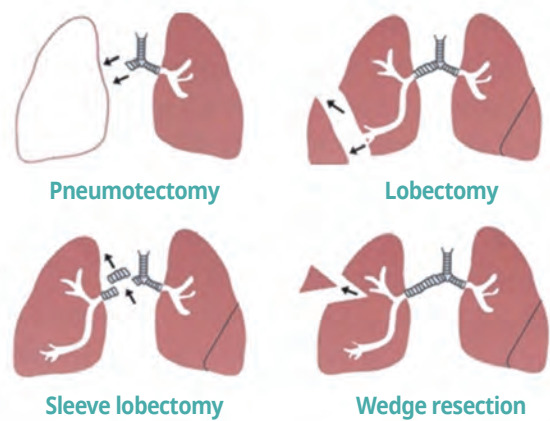
- For early stage non-small cell carcinoma, pneumotectomy, lobectomy or segmentectomy is done by thoracoscope or conventional open surgery.



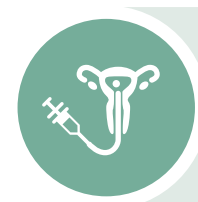
* Compared to the above cost estimation, actual cost and duration of stay is subject to change depending on each patient's condition.



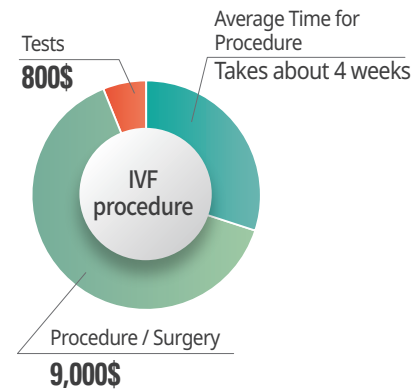
Radical nephrectomy and thrombosis in inferior vena cava



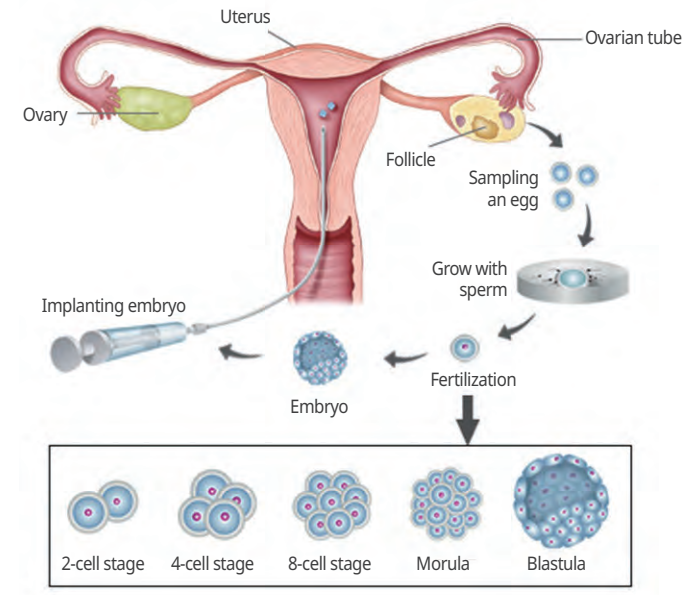
■ IVF and Embryo Transfer



- A mature egg and sperm is sampled and combined in glass artificially, and it is planted in woman's uterus, inducing a successful pregnancy.



* Compared to the above cost estimation, actual cost and duration of stay is subject to change depending on each patient's condition.



Embryogenesis

| | |
|------------------------------|--|
| Hospital Visit | Women: Blood test, uterus ultrasonography, hysterosalpingography Men: Sperm test |
| 2nd day of period | Ovarian hyperstimulation for ovulation (by oral medicine or injection) |
| 12 ~ 14 days of period | Sampling mature egg and healthy sperm, Fertilization of an egg and sperm outside body, and grow the embryo and Cryopreserve the embryo on 3rd to 6th day |
| Rest for 2 to 3 months | |
| Visit 2nd day of period | Making uterus environment for successful pregnancy (by oral medicine or injection) |
| 15 to 20 days of period | Implant thawed embryo in uterus |
| 7 to 12 days of implantation | Pregnancy test (blood test) |

VIP Health Promotion Center

Gachon University Gil Medical Center(GUGMC) VIP Health Promotion Center is proudly certified as Center of Excellence by the Korea Society of Health Screening & Promotion, Korean Gastrointestinal Endoscopy Research Foundation and Korean Gastroenterology Endoscopy Society. Experienced gastroenterologists with extensive expertise perform endoscopy, colonoscopy and related therapeutic procedures. In the event of detection of complex or severe issues, prompt arrangement to the appropriate medical department is ensured, and health check-up result consultation can be provided within 2 to 3 days. Additionally, an English translation of the report will be provided as well. Several vaccination is available, such as Gardasil (for cervical cancer prevention), pneumococcal vaccine and Herpes Zoster vaccine.



Certified as an Excellent Health Check-up Center



Certified as an Excellent Endoscopy Center

Vaccination Program

- Gardasil 9 vaccine for cervical cancer(total 3 times)
- Pneumococcal vaccine (total 1 time)
- Herpes Zoster vaccine (total 1 time)

* Contact us for price



Essential (2.5Hours)

| SECTION | TEST ITEMS | PRICE |
|-----------------------|--|--------------------|
| Body Measurement | Height/Weight, Blood pressure, Pulse rate, Body Composition analysis | Male 680,000₩ |
| Laboratory Test | Complete blood composition, Anemia, Diabetes, Hyperlipidemia, Hyper-/Hypothyroidism, Kidney/Liver function, Viral hepatitis(A,B,C), Tumor marker(liver, G.I., prostate gland, ovaries), Syphilis, AIDS, Rheumatism, Gout, Urinalysis | |
| Eye & Ear Exam | Visual acuity, Intraocular pressure, Fundus photography, Audiometry | |
| Oral Exam | Dental check | |
| Gastrointestinal Test | Abdomen sonography, *Gastroendoscopy(non-sedation) | |
| Pulmonary Test | Chest X-ray, Pulmonary function test | Female 750,000₩ |
| Cardiac Test | Electrocardiogram(ECG) | |
| For Women | Mammography, Liquid-based pap smear | |
| Consultation | Questionnaire & Consultation, CD copy and reports | |
| Note | *For sedation, additional 120,000 won charged | |

VIP Health Promotion Center

■ LUNG BASIC (3Hours)

| SECTION | TEST ITEMS | PRICE |
|-----------------------|--|--|
| Body Measurement | Height/Weight, Blood pressure, Pulse rate, Body Composition analysis | Male 890,000₩ Female 960,000₩ |
| Laboratory Test | Complete blood composition, Anemia, Diabetes, Hyperlipidemia, Hyper-/Hypothyroidism, Kidney/Liver function, Viral hepatitis(A,B,C), Tumor marker(liver, G.I., prostate gland, ovaries), Syphilis, AIDS, Rheumatism, Gout, Urinalysis | |
| Eye & Ear Exam | Visual acuity, Intraocular pressure, Fundus photography, Audiometry | |
| Oral Exam | Dental check | |
| Gastrointestinal Test | Abdomen sonography, Gastroendoscopy(sedation) | |
| Pulmonary Test | Chest X-ray, Pulmonary function test, Low dose chest CT | |
| Cardiac Test | Electrocardiogram(ECG) | |
| For Women | Mammography, Liquid-based pap smear, | |
| Consultation | Questionnaire & Consultation, CD copy and reports | |

■ GI BASIC (3Hours)

| SECTION | TEST ITEMS | PRICE |
|-----------------------|--|--|
| Body Measurement | Height/Weight, Blood pressure, Pulse rate, Body Composition analysis | Male 890,000₩ Female 960,000₩ |
| Laboratory Test | Complete blood composition, Anemia, Diabetes, Hyperlipidemia, Hyper-/Hypothyroidism, Kidney/Liver function, Viral hepatitis(A,B,C), Tumor marker(liver, G.I., prostate gland, ovaries), Syphilis, AIDS, Rheumatism, Gout, Urinalysis | |
| Eye & Ear Exam | Visual acuity, Intraocular pressure, Fundus photography, Audiometry | |
| Oral Exam | Dental check | |
| Gastrointestinal Test | Abdomen sonography, Gastroendoscopy+Colonoscopy(sedation) | |
| Pulmonary Test | Chest X-ray, Pulmonary function test | |
| Cardiac Test | Electrocardiogram(ECG) | |
| For Women | Mammography, Liquid-based pap smear | |
| Consultation | Questionnaire & Consultation, CD copy and reports | |



■ CANCER STANDARD (5Hours)

| SECTION | TEST ITEMS | PRICE |
|-----------------------|---|--|
| Body Measurement | Height/Weight, Blood pressure, Pulse rate, Body Composition analysis, Bone densitometry | Male 2,200,000₩ Female 2,400,000₩ |
| Laboratory Test | Complete blood composition, Anemia, Diabetes, Hyperlipidemia, Hyper-/Hypothyroidism, Kidney/Liver function, Viral hepatitis(A,B,C), Tumor marker(liver, G.I., prostate gland, ovaries), Syphilis, AIDS, Rheumatism, Gout, Iron, TIBC(Total Iron Binding Capacity), C-peptide (for Diabetes), Urinalysis | |
| Eye & Ear Exam | Visual acuity, Intraocular pressure, Fundus photography, Audiometry | |
| Oral Exam | Dental check | |
| Cerebrovascular Test | Carotid ultrasonography | |
| Thyroid Test | Thyroid ultrasonography | |
| Gastrointestinal Test | Abdomen ultrasonography, Abdomen+Pelvic CT(+) Gastroendoscopy +Colonoscopy(sedation) | |
| Pulmonary Test | Chest X-ray, Pulmonary function test, Low dose chest CT | |
| Cardiac Test | Electrocardiogram(ECG) | |
| For Men | Prostate ultrasonography, Male hormone | |
| For Women | Mammography, Liquid-based pap smear, Uterus ultrasonography, Human papilloma virus(HPV), Female hormone(blood), Breast ultrasonography | |
| Consultation | Questionnaire & Consultation, CD copy and reports | |

(+): Contrast-enhanced exam

■ Heart-Brain Premium (2Days)

| SECTION | TEST ITEMS | PRICE |
|-----------------------|---|--|
| Body Measurement | Height/Weight, Blood pressure, Pulse rate, Body Composition analysis, Bone densitometry, Stress measurement, Bio-age measurement | Male 5,500,000₩ Female 5,800,000₩ |
| Laboratory Test | Complete blood composition, Anemia, Diabetes, Hyperlipidemia, Hyper-/Hypothyroidism, Kidney/Liver function, Viral hepatitis(A,B,C), Tumor marker(liver, G.I., prostate gland, ovaries), Syphilis, AIDS, Rheumatism, Gout, Iron, TIBC(Total Iron Binding Capacity), C-peptide (for Diabetes), NK cell test, Urinalysis | |
| Eye & Ear Exam | Visual acuity, Intraocular pressure, Fundus photography, Audiometry | |
| Oral Exam | Dental check | |
| Cerebrovascular Test | Carotid ultrasonography, Brain MRI+MRA(including dementia+Parkinson’s disease MRI) *For the 1st check-up benefit: Apo E genotyping (blood) | |
| Thyroid Test | Thyroid ultrasonography | |
| Gastrointestinal Test | Abdomen ultrasonography, Gastroendoscopy+ Colonoscopy(sedation), Abdomen+Pelvic CT(+) | |
| Pulmonary Test | Chest X-ray(front/lat), Pulmonary function test, Low dose chest CT | |
| Cardiac Test | Electrocardiogram(ECG), Echocardiography, Coronary artery CT(+), Arteriosclerosis test | |
| Man Test | Prostate ultrasonography, Male hormone | |
| For Women | Mammography, Liquid-based pap smear, Breast ultrasonography, Uterus ultrasonography, Human papilloma virus(HPV), Female hormone and Mastrocheck(blood) | |
| Consultation | Questionnaire & Consultation, CD copy and reports, VIP locker room | |
| Note | Provides VIP locker room during check-up (not accommodation) & Orafang bowel prep tablets | |

(+): Contrast-enhanced exam

■ VIP Premium (2Days)

| SECTION | TEST ITEMS | PRICE |
|----------------------------------|---|--|
| Body Measurement | Height/Weight, Blood pressure, Pulse rate, Body Composition analysis, Bone densitometry, Stress measurement, Bio-age measurement | Male 7,500,000₩ Female 7,800,000₩ |
| Laboratory Test | Complete blood composition, Anemia, Diabetes, Hyperlipidemia, Hyper-/Hypothyroidism, Kidney/Liver function, Viral hepatitis(A,B,C), Tumor marker(liver, G.I., prostate gland, ovaries), Syphilis, AIDS, Rheumatism, Gout, Iron, TIBC(Total Iron Binding Capacity), C-peptide (for Diabetes), NK cell test, Urinalysis | |
| Eye & Ear Exam | Visual acuity, Intraocular pressure, Fundus photography, Audiometry | |
| Oral Exam | Dental check | |
| Special Exam Pick 1 from 1) & 2) | 1) Select 2 from Cervical/Lumbar/Knee(one side)/Foot(one side)/Pelvis MRI OR 2) Torso PET-CT(*): requires 3 days | |
| Cerebrovascular Test | Carotid ultrasonography, Arteriosclerosis test, Brain MRI+MRA(including dementia+Parkinson's disease MRI), *For the 1st check-up benefit: Apo E genotyping (blood) | |
| Thyroid Test | Thyroid ultrasonography | |
| Gastrointestinal Test | Abdomen ultrasonography, Abdomen+Pelvic CT(+) Gastroendoscopy+ Colonoscopy(sedation) | |
| Pulmonary Test | Chest X-ray(front/lat), Pulmonary function test, Low dose chest CT | |
| Cardiac Test | Electrocardiogram(ECG), Echocardiography, Coronary artery CT(+) | |
| For Men | Prostate ultrasonography, Male hormone | |
| For Women | Mammography, Liquid-based pap smear, Uterus ultrasonography, Human papilloma virus(HPV), Breast ultrasonography, Female hormone and Mastrocheck(blood) | |
| Gene | Select 1 from Male cancer/Female cancer/General disease/ Cerebrocardiovascular disease /Gynecological disease(Hellogene 5 types) | |
| Consultation | Questionnaire & Consultation, CD copy and reports | |
| Note | Provides VIP locker room during check-up (not accommodation) & Orafang bowel prep tablets | |

(+): Contrast-enhanced exam, (*): radioisotope exam

■ VIP Premium (3Days, 1 night hospital stay)

| SECTION | TEST ITEMS | PRICE |
|-----------------------|---|--|
| Body Measurement | Height/Weight, Blood pressure, Pulse rate, Body Composition analysis, Bone densitometry, Stress measurement, Bio-age measurement | Male 10,300,000₩ Female 10,600,000₩ |
| Laboratory Test | Complete blood composition, Anemia, Diabetes, Hyperlipidemia, Hyper-/Hypothyroidism, Kidney/Liver function, Viral hepatitis(A,B,C), Tumor marker(liver, G.I., prostate gland, ovaries), Syphilis, AIDS, Rheumatism, Gout, Iron, TIBC(Total Iron Binding Capacity), C-peptide (for Diabetes), NK cell test, Urinalysis | |
| Eye & Ear Exam | Visual acuity, Intraocular pressure, Fundus photography, Audiometry | |
| Oral Exam | Dental check | |
| Special Exam | Select 2 from Cervical/Lumbar/Knee(one side)/Foot(one side)/Pelvis MRI AND do Torso PET CT(*)- on the 3 rd day of check-up | |
| Cerebrovascular Test | Carotid ultrasonography, Arteriosclerosis test, Brain MRI+MRA(including dementia+Parkinson's disease MRI), *Only 1 st exam: Apo E genotyping | |
| Thyroid Test | Thyroid ultrasonography | |
| Gastrointestinal Test | Abdomen ultrasonography, Abdomen+Pelvic CT(+) Gastroendoscopy+ Colonoscopy(sedation) | |
| Pulmonary Test | Chest X-ray(front/lat), Pulmonary function test, Low dose chest CT | |
| Cardiac Test | Electrocardiogram(ECG), Echocardiography, Coronary artery CT(+) | |
| For Men | Prostate ultrasonography, Male hormone | |
| For Women | Mammography, Liquid-based pap smear, Uterus ultrasonography, Human papilloma virus(HPV), Breast ultrasonography, Female hormone and Mastrocheck(blood) | |
| Gene | Select 1 from Male cancer/Female cancer/General disease/ Cerebrocardiovascular disease /Gynecological disease(Hellogene 5 types) | |
| Consultation | Questionnaire & Consultation, CD copy and reports | |
| Accommodation | Provide VIP room for 1 night stay (no meals) Day 1: Check-up → Check-in → Bowel prep Day 2: Check-up → Check-out Day 3: Do PET-CT scan | |
| Note | Provides VIP locker room during check-up & Orafang bowel prep tablets | |

(+): Contrast-enhanced exam, (*): radioisotope exam

■ JUNIOR1519 (2Hours)

| SECTION | TEST ITEMS | PRICE |
|-----------------------|--|----------|
| Body Measurement | Height/Weight, Blood pressure, Pulse rate, Body Composition analysis | 700,000₩ |
| Laboratory Test | Complete blood composition, Anemia, Diabetes, Hyperlipidemia, Hyper-/Hypothyroidism, Kidney/Liver function, Viral hepatitis(A,B,C), Tumor marker(liver, G.I., prostate gland, ovaries), Syphilis, AIDS, Rheumatism, Gout, Iron, TIBC (Total Iron Binding Capacity), C-peptide (for Diabetes), Urinalysis | |
| Eye & Ear Exam | Visual acuity, Intraocular pressure, Fundus photography, Audiometry | |
| Oral Exam | Dental check | |
| Thyroid gland | Thyroid ultrasonography | |
| Gastrointestinal Test | Abdomen ultrasonography | |
| Pulmonary Test | Chest X-ray(front/lat), Pulmonary function test | |
| Cardiac Test | Electrocardiogram(ECG) | |
| Consultation | Questionnaire & Consultation, CD copy and reports | |

■ ADDITIONAL EXAM

| SECTION | TEST ITEMS | PRICE(₩) |
|------------------------------------|--|-----------|
| Torso | PET-CT | 1,300,000 |
| Brain | PET-CT | 700,000 |
| | Brain MRI | 800,000 |
| | Brain MRI+MRA | 1,200,000 |
| | Brain MRI+MRA (including Dementia + Parkinson) | 2,500,000 |
| | Brain MRI+MRA(Parkinson) | 2,000,000 |
| | Brain MRI+MRA(Dementia) | 2,000,000 |
| | Dementia genetic test | 200,000 |
| GI | Colonoscopy(sedation) | 300,000 |
| | Gastroendoscopy(sedation) | 200,000 |
| | Sedation | 120,000 |
| | Endoscopic Biopsy | 100,000 |
| | Abdominal pelvic CT | 350,000 |
| Pulmonary Test | Low dose Chest CT | 200,000 |
| Cerebral- crdiovascular Test | Coronary artery CT | 400,000 |
| | Echocardiography | 250,000 |
| | Carotid artery ultrasonography | 200,000 |
| Prostate | Prostate ultrasonography | 200,000 |
| Thyroid | Thyroid ultrasonography | 200,000 |
| Breast | Breast ultrasonography | 200,000 |
| Pelvis | Uterus ultrasonography | 200,000 |

■ ADDITIONAL EXAM

| SECTION | TEST ITEMS | PRICE(W) |
|-----------------------------------|---|----------|
| Bone | Bone density | 70,000 |
| Man | Male Hormone | 100,000 |
| Woman | Liquid-based Pap smear, | 80,000 |
| | Human papilloma virus(HPV) test | 120,000 |
| | Mammography | 70,000 |
| | Female Hormone | 60,000 |
| MRI | Lumbar MRI | 800,000 |
| | Cervical MRI | 800,000 |
| | Knee MRI(Right or Left) | 800,000 |
| | Foot MRI(Right or Left) | 800,000 |
| | Pelvic MRI | 800,000 |
| Anti-aging functional medicine | Hair mineral | 210,000 |
| | Stress test | 40,000 |
| | Arteriosclerosis | 80,000 |
| | 90 types of food allergy | 350,000 |
| | Organic Acids Profile | 250,000 |
| | Immune cell (NK) | 190,000 |
| | Earlytect colon cancer test(stool test) | 200,000 |
| | Active oxygen-antioxidant measure | 100,000 |
| | Bio-age test | 40,000 |

■ ADDITIONAL EXAM

| SECTION | TEST ITEMS | PRICE(W) |
|-----------|--|-----------|
| Hellogene | 5 types of male cancer | 140,000 |
| | 5 types of female cancer | 140,000 |
| | 5 types of cerebro-cardiovascular diseases | 175,000 |
| | 5 types of general diseases | 175,000 |
| | 5 types of female diseases | 175,000 |
| | 11 types of cancer | 300,000 |
| | 27 types of general disease | 400,000 |
| | 38 types of platinum light | 600,000 |
| | 48 types of platinum | 1,100,000 |
| | 92 types of noble | 2,000,000 |



International Healthcare Center

International Healthcare Center (IHC) of Gachon University Gil Medical Center(GUGMC) has highly experienced medical coordinators who are fluent in English, Russian, Chinese, or Mongolian and we provide one-to-one guidance and support throughout patient’s medical treatment process. We also provide services including complimentary transportation service from and to Incheon International Airport, nearby hotel booking, administrative support for International Health Insurance or Medical Visa Issuance, and 24/7 Hotline Service to provide safe and high quality medical care for foreign patients.

- 2016 Global Healthcare Merit Award, 'Minister of Health and Welfare Award'
- 2017 Global Healthcare Merit Award, 'Director of Korea Health Industry Promotion Hospital Award'

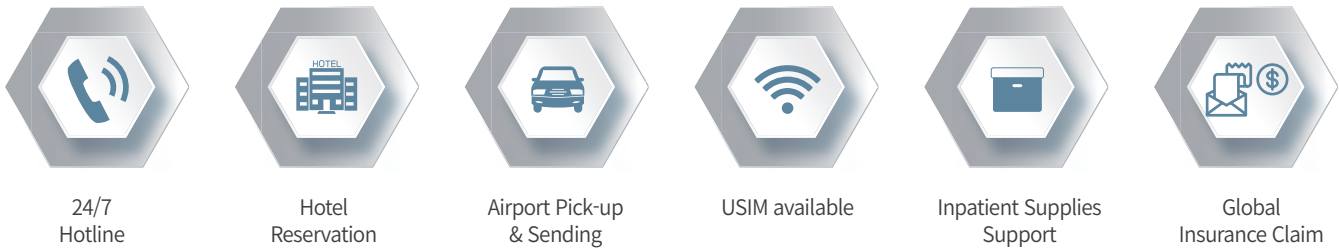


Incheon City Designation as an Excellent Hospital Attracting Foreign Patients (12.2022 ~ 12.2024)

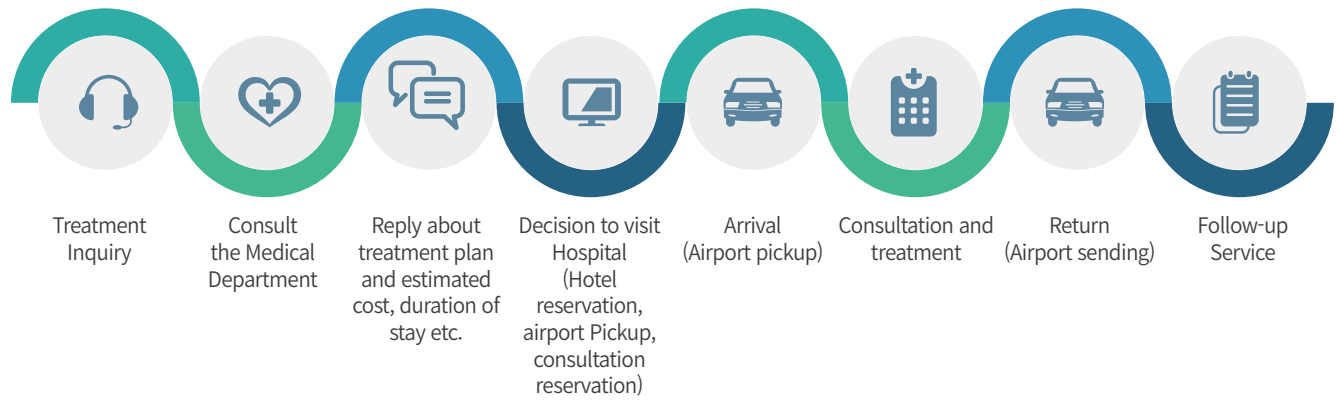
Language Translation Support

| | |
|--|--|
|  | For English, (TEL) +82-32-460-3213, (E-mail) gihc@gilhospital.com |
|  | For Chinese, (TEL) +82-32-460-9069, (E-mail) china@gilhospital.com |
|  | For Russian, (TEL) +82-32-460-9074, (E-mail) ru@gilhospital.com |
|  | For Mongolian, (TEL) +82-32-460-9063, (E-mail) mgl@gilhospital.com |

Concierge Services



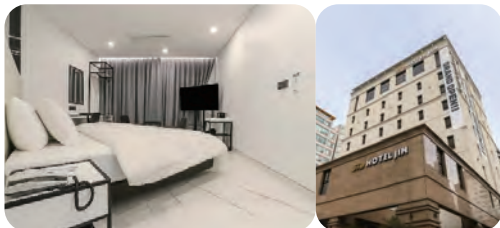
Treatment Procedure



List of Hotels with Partnership



Oakwood Premier Incheon



Hotel Jin



Cacao Hotel



The november Stay in Sondo

Gachon Gil Foundation

Gachon Gil Foundation is a Korean medical foundation of public interest that combines Medicine, Education, Media and Volunteer.



